



Agile Pro

European engineered sit-to-stand desking.



Agile Pro is an evolution of Agile - European engineering, refined frame details and low noise when in action, bring you the best in electric sit-to-stand desking.

- **Enhance Productivity**
- **Improve Mood and Satisfaction**
- **Reduce Pain and Discomfort**





Agile Pro Desks

Electric 3 Column Single Sided Desk (SSD)



Frame



White P/C



Silver P/C



Black P/C

Melamine / PVC Edge



White



Silver



Nordic Maple



Atlantic Oak



Black



STANDARD FEATURES

- Three column single sided frame.
- Adjustable height range 620 – 1270mm (Includes worktop).
- Fold-out leg for easy assembly.
- Quality European gearing for up/down adjustment.
- Extra quiet electric desk in action – Under 40 decibels.
- Low standby power consumption – Under 0.1 watt.
- Power type: 90 – 230V AC.
- Dual motor adjusting desk at 35mm per sec.
- 140kg weight lift capacity.
- Digital three point memory handset with LED display.
- Commercial-grade 25mm worktops finished in melamine with 2mm PVC edge.
- Five standard melamine worktop colours and three powdercoat frame colours to choose from.
- Standard worktop sizes:
1800w x 800d, 1500w x 800d, 1200w x 700d.
- Frames suitable for tops from 1200mm to 2100mm.

- In-built anti-collision protection – set sensitivity, shelf and storage stops.
- Optional cable management tray, GPO & data plates.
- Compatible with Studio50, Active25 and E-panel acoustic screens.

UPGRADES

- Bluetooth compatible with Smart Box.
- Compatible with Smart Office App for iOS and Android to control desk function via phone.
- Touch digital handset with USB charging port.
- In-desk digital handset (requires custom worktop).
- Custom size worktops available on request.

5
YEAR
WARRANTY

↑↓
HEIGHT
ADJUSTABLE

E1
BOARD
CERTIFIED

ISO
14001
EMS



Agile Pro Desks

Electric 3 Column Double Sided Desk (DSD)



Frame



White P/C



Silver P/C



Black P/C

Melamine / PVC Edge



White



Silver



Nordic Maple



Atlantic Oak



Black



STANDARD FEATURES

- Three column double sided frame.
- Adjustable height range 620 – 1270mm (Includes worktop).
- Fold-out leg for easy assembly.
- Quality European gearing for up/down adjustment.
- Extra quiet electric desk in action – Under 40 decibels.
- Low standby power consumption – Under 0.1 watt.
- Power type: 90 – 230V AC.
- Dual motor adjusting desk at 35mm per sec.
- 140kg weight lift capacity.
- Digital three point memory handset with LED display.
- Commercial-grade 25mm worktops finished in melamine with 2mm PVC edge.
- Five standard melamine worktop colours and three powdercoat frame colours to choose from.
- Standard worktop sizes:
1800w x 800d, 1500w x 800d, 1200w x 700d.
- Frames suitable for tops from 1200mm to 2100mm.

- In-built anti-collision protection – set sensitivity, shelf and storage stops.
- Double sided desk comes standard with integrated cable management tray including GPO & data plates.
- Compatible with Studio50, Active25 and E-panel acoustic screens.

UPGRADES

- Bluetooth compatible with Smart Box.
- Compatible with Smart Office App for iOS and Android to control desk function via phone.
- Touch digital handset with USB charging port.
- In-desk digital handset (requires custom worktop).
- Custom size worktops available on request.

5
YEAR
WARRANTY

↑↓
HEIGHT
ADJUSTABLE

E1
BOARD
CERTIFIED

ISO
14001
EMS



BIFMA



Agile Pro Handsets

Specifications

Control how you sit and stand with your Agile Pro desk. Customise your handset with the ability to save up to three memory positions, or choose to upgrade the look of your handset with touch glass displays.



Digital Handset (Standard)

- Customisable handset
- European design
- Modern look and feel
- Up to three memory positions
- Three digit LED display
- Responsive up / down function
- Under-desk mounting
- Slightly bevelled surface makes it easy to operate

Touch Digital Handset with USB (Upgrade)

- Customisable handset
- European design
- Sleek glass touch screen
- Up to three memory positions
- Three digit LED display
- Responsive up / down function
- USB port - for charging smart phones, tablets and other mobile devices
- Under-desk mounting

In-Desk Digital Handset (Upgrade)

- Customisable handset
- European design
- Sleek glass touch screen
- Up to three memory positions
- Three digit LED display
- Responsive up / down function
- In-desk mounting (requires custom worktop)
- Key-lock

Agile Pro Control Box

The inner workings.

FEATURES

- 240 W output power
- Cost-effective SMPS (switched-mode power supply)
- Ultra-efficient 0.1 W standby power consumption (reducing CO2 emissions to a minimum)
- Improved driving dynamics: increased responsiveness & smooth start/stop
- System protection ensured with integrated collision detection
- Storage and shelf stops
- Sit/stand memory for Basic Hand Controls
- Compatibility for standalone/mobile desk solutions
- Slim, low-profile design (height 40 mm)



Smart Office

Bluetooth Smart Box and Smart Office App

Connect to your office desk and personalise through the Smart Office App.

FEATURES

- Operate up and down of desk
- Programme your frequently used positions with three memory settings





Agile Pro enables single and shared users to experience a combination of quality, function and modern design in a sit-to-stand desk.



Agile Pro Screens

Compatible Screen Options

Studio50



FEATURES

- 50mm extruded aluminium frame in Black, White or Silver powdercoat.
- Studio 50 screens are pinnable and can be upholstered in any fabric of your choice.
- The core and frame are 100% recyclable.
- Hand built in New Zealand.
- Options available for freestanding, desk hung, Agile and Agile Pro single & double-sided desking.
- Super strong, built to last with serrated flathead fixings made from high quality carbon steel.
- Custom sizes and fabric are available.

AGILE PRO SIZES

1200w x 870h x 50d mm

1500w x 870h x 50d mm

1800w x 870h x 50d mm

Active25



FEATURES

- 25mm thick, pinnable upholstered screen.
- Extruded aluminium frame finished in Black, White or Silver powdercoat.
- Frame and brackets 100% recyclable.
- Active25's MDF core is FSC rated and has the Environmental Choice tick.
- Locally sourced and imported components.
- Hand built in New Zealand.
- Upholstered in Knight's standard fabric ranges making it easy to add colour to your office space.
- Options available for freestanding, desk hung, Agile and Agile Pro single & double-sided desking.
- Brackets sold separately.
- Custom sizes and fabric are available.

AGILE PRO SIZES

1200w x 800h x 25d mm

1500w x 800h x 25d mm

1800w x 800h x 25d mm

E-panel



FEATURES

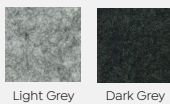
- 12mm E-panel pinnable substrate.
- 30mm radius corners top and bottom.
- Designed for the Agile desking range, sits 400mm above desk.
- Choose from white or black brackets to match your worktop choice (brackets included with panels).
- Available in two colours Light and Dark Grey.
- 100% Polyester recycled PET.
- Water and impact resistant.
- Great sound barrier.
- Easy to install.

SIZES

1500w x 600h x 12d mm

1800w x 600h x 12d mm

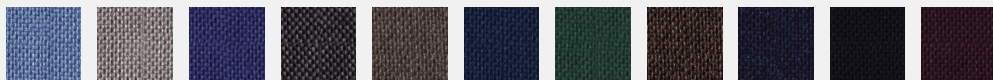
E-panel



Light Grey

Dark Grey

Crown



Freshwater

Riverstone

Electric

Galaxy

Tussock

Indigo

Evergreen

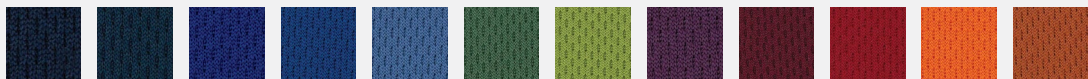
Peat

Midnight

Ebony

Tawny Port

Breathe



Navy

Steel

Royal Blue

Sky Blue

Baby Blue

Fern Green

Lime Green

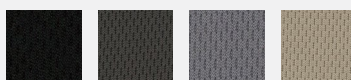
Plum

Ruby Red

Tomato Red

Bright Orange

Burnt Orange



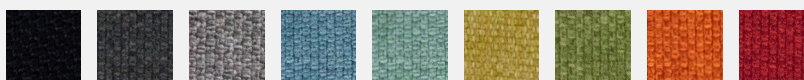
Black

Charcoal

Grey

Camel

Splice



Black

Charcoal

Grey

Blue

Lagoon

Yellow

Green

Orange

Red

Agile Pro Desks

Accessories



Agile Pro SSD Cable Tray & Cover



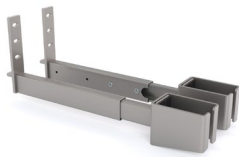
Agile Pro DSD Cable Tray Bridge



Agile Pro Data Plate



Agile Pro GPO Power Plate



Agile Pro Active25 SSD Bracket



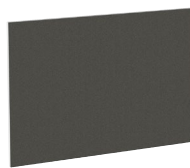
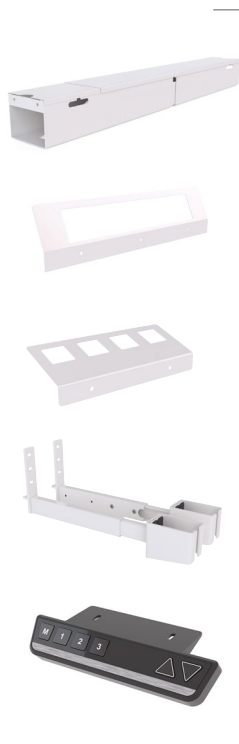
Agile Pro Active25 DSD Bracket



Agile Pro Studio50 SSD Bracket



Agile Pro Studio50 DSD Bracket



Agile Pro 1500mm SSD with cable management, Active25 screen and standard digital handset.

As an integral part of the design process, Agile Pro supports policies and practices that puts your business at the heart of what we do. Our designs and products are carefully manufactured from trusted partners, with certifications including:



WARRANTY

Knight Group guarantees Agile Pro for up to 5 years against faulty parts and workmanship based on a normal 40 hour week. Visit www.knightgroup.co.nz for full warranty terms & conditions.



E1 BOARD

LFE stands for Low Formaldehyde Emission and is known as "E1", an internationally recognised standard of safety for composite wood board. This certification characterises an engineered wood product that is unobjectionable for almost all intents and purposes and may be used for interior finishing and furniture.



ISO 14001

ISO 14001 Certification is the international standard that specifies requirements for an effective Environmental Management System (EMS). It helps organizations improve their environmental performance through more efficient use of resources and reduction of waste. Agile Pro is manufactured in factories accredited to ISO14001.



GOOD WOOD

The manufacturer's environmental policy confirms that composite wood materials are sourced from well-managed, sustainable forests and that they hold internationally recognised forestry stewardship certification.



AFRDI

AFRDI Certification is a set of standards covering strength, durability, stability and safety (and ergonomics in the case of desks and workstations). This means that Knight are accountable for maintaining the quality of our products, submitting them for regular auditing to ensure they meet the highest standards for commercial use.



BIFMA

BIFMA Certification focuses on safety and performance standards developed by the BIFMA Engineering Committee. The standards provide manufacturers, specifiers, and users with a common basis for evaluating safety, durability, and the structural adequacy of the specified furniture, independent of construction materials. The standards define specific tests, laboratory equipment to be used, the conditions of test, and the minimum acceptance levels to be used in evaluating these products.



GREEN TAG

Global Green Tag certified products pass the world's toughest standards to protect you, and your family's health and safety, minimise your impact on our finite planet and put the power of selection back in your hands.



knightgroup.co.nz