

Cubit Tambour

Assembly Instructions

Tools Required: Powered Screwdriver



Cubit Tambour

Assembly Instructions

Thank you for purchasing Knight product, please carefully read the assembly instructions prior to installment to gain a complete understanding of the product. It provides you with important information about the safety, use, installation and maintenance.

WARNING: FAILURE TO COMPLY WITH OR OBSERVE ALL ASSEMBLY, SAFETY AND OPERATION INSTRUCTIONS REGARDING THE USE OF THIS PRODUCT MAY RESULT IN SERIOUS BODILY INJURY.

SAFETY

- The product must be used in a safe manner. Inappropriate use may cause damage to the product and/or cause bodily harm to the user or persons nearby.
- Don't locate furniture in direct sunlight or near air-conditioning inlet or heating radiator.
- Don't put high-temperature or frozen objects on furniture.
- Safely carry product to location of assembly.
- Retain this operation manual and pass it on to any future owner.

SET UP AND INSTALLATION

- Assemble the product according to the assembly instructions.
- To prevent possible scratches or damage, assemble the product on a soft surface such as a blanket, carpet or packaging.
- Place the product a safe distance from window frames, radiators, furniture etc. so that persons cannot become trapped.

It is recommended that this product is assembled by 2 people.

Any questions contact Knight on 0800 143 143

Due to continuous improvement of our products, our assembly instructions may not be in complete accordance with the product and we apologise in advance.

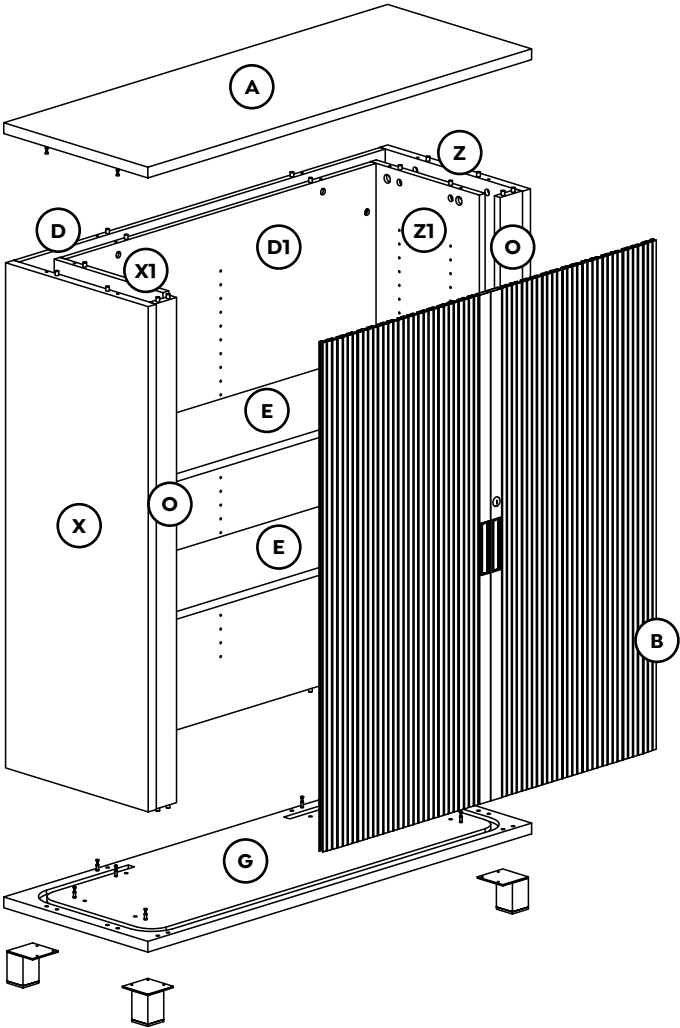
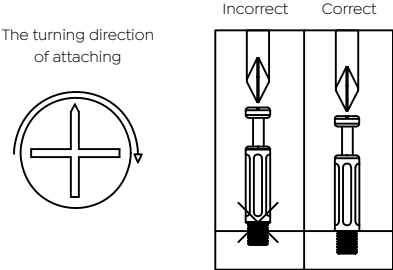


Cubit Tambour

Assembly Instructions

Parts

Item	Description	Quantity
A	Top Panel	1
X	Left Side Panel (Outer)	1
X1	Left Side Panel (Inner)	1
Z	Right Side Panel (Outer)	1
Z1	Right Side Panel (Inner)	1
D	Back Panel (Outer)	1
D1	Back Panel (Inner)	1
G	Bottom Panel	1
O	Batten	2
E	Moveable Shelf	2
B	Roller Door	2



Cubit Tambour

Assembly Instructions

Parts

Item	Description	Quantity
c1	6x35 Cam Bolt	44
d1	8x30 Dowel Pin	56
c2	Cam Sticker	44
p1	Shelf Pin	10
s1	4x25 Screw	12
m2	Metal Feet	4
s20	6x60 Fix Bolt	4



c1 6x35 Cam Bolt



d1 8x30 Dowel Pin



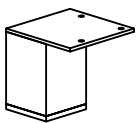
c2 Cam Sticker



s1 4x25 Screw



p1 Shelf Pin



m2 Metal Feet



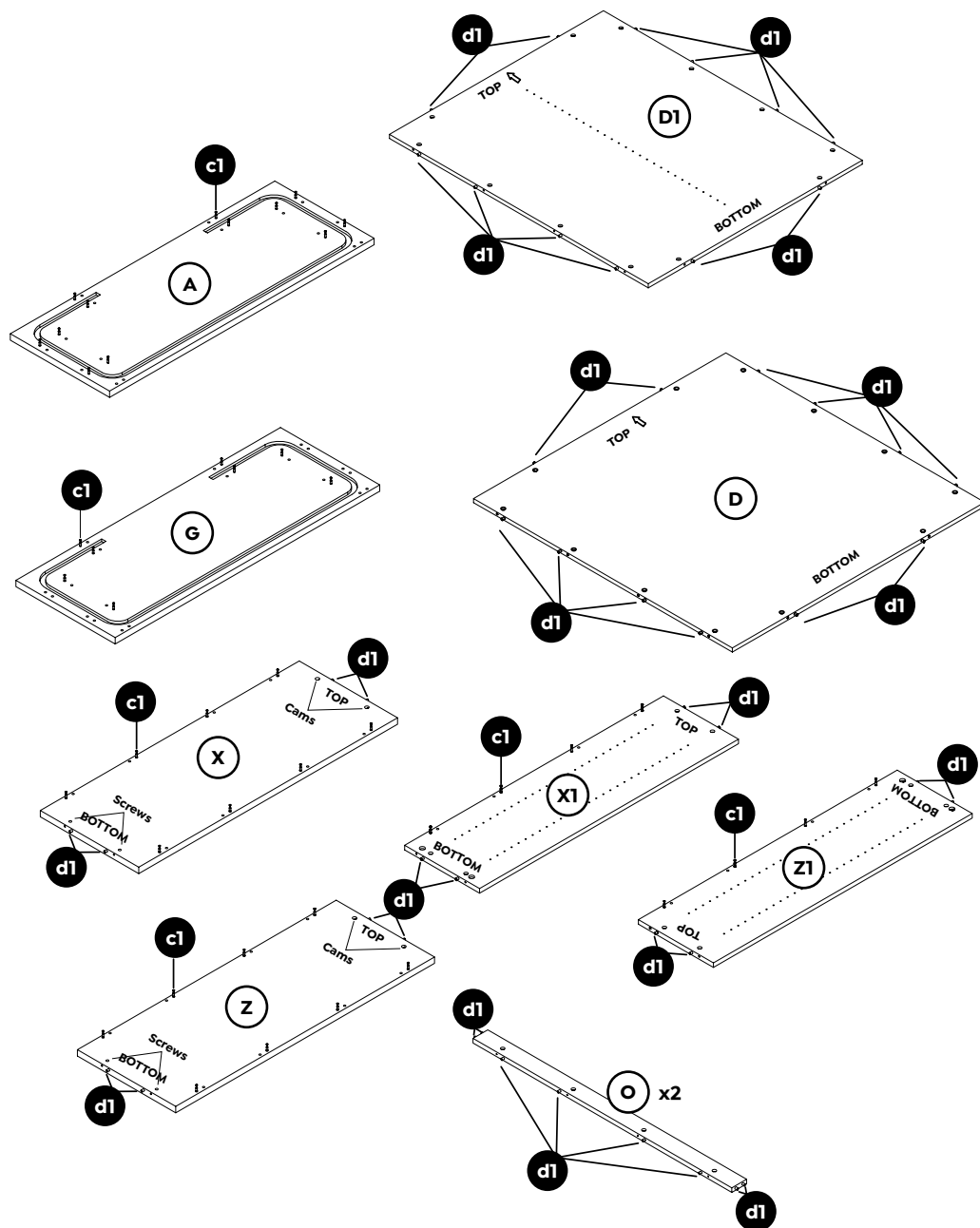
s20 6x60 Fix Bolt



Cam
(pre-installed)

Step 1

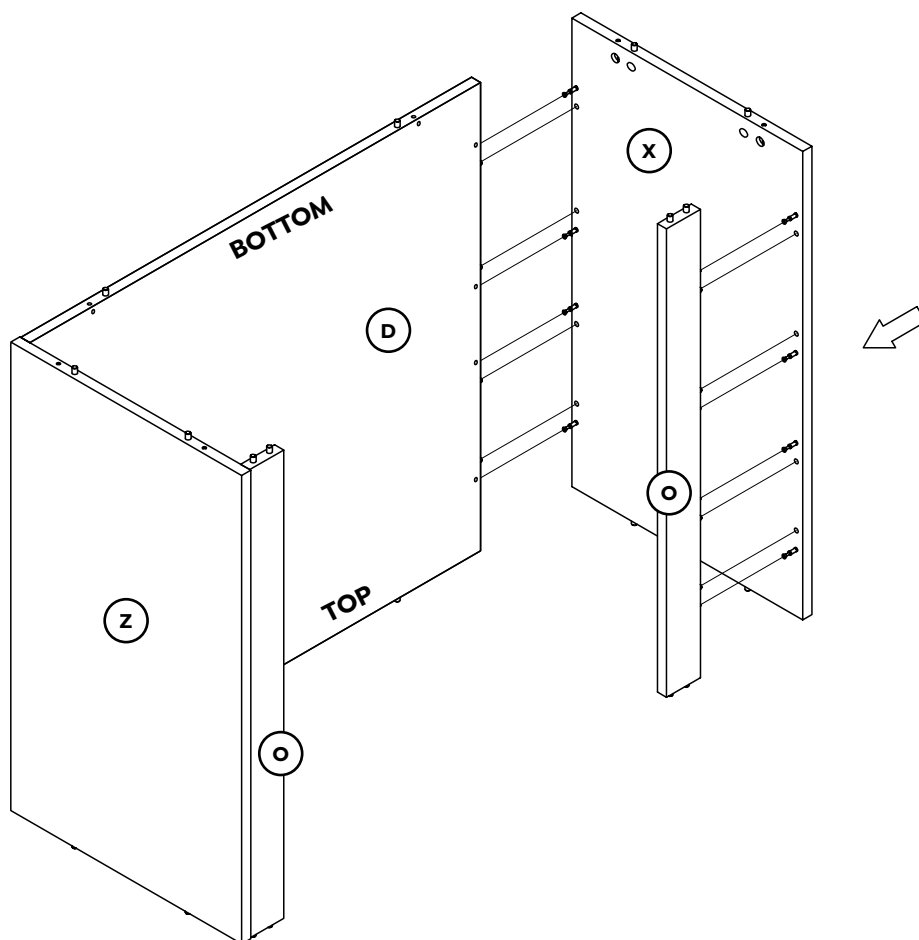
Preparation for top panel A, bottom panel G, vertical O, left side panel X, X1, right side panel Z, Z1, back panels D, D1.



1. Insert cam bolts (c1) and dowel pins (d1) into panels A, G, X, X1, Z and Z1 as illustrated above.
2. Insert dowel pins (d1) into panel D, D1, O as illustrated above.

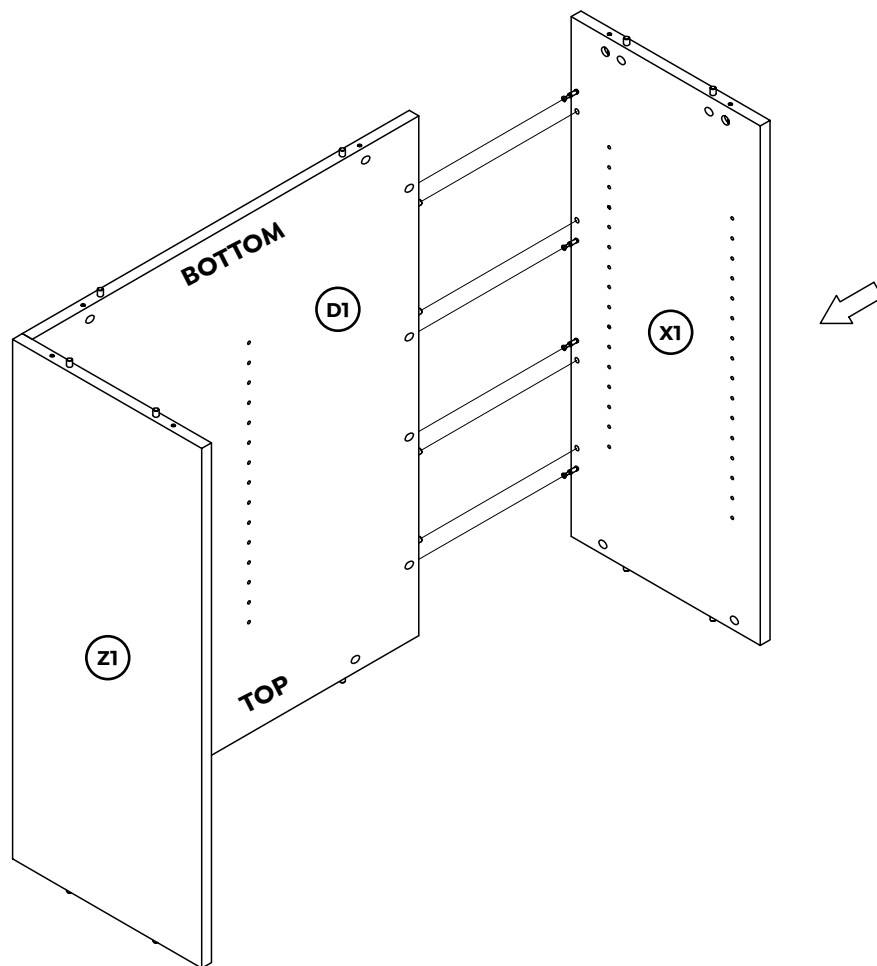
Step 2

Outer panel assembly - Back panel D, left side panel X, right side panel Z and batten O (Assemble with the top of back panel D pointing towards the floor). Insert cam bolts (c1) on panel X and Z into cams on panels D, O and tighten in a clockwise direction.



Step 3

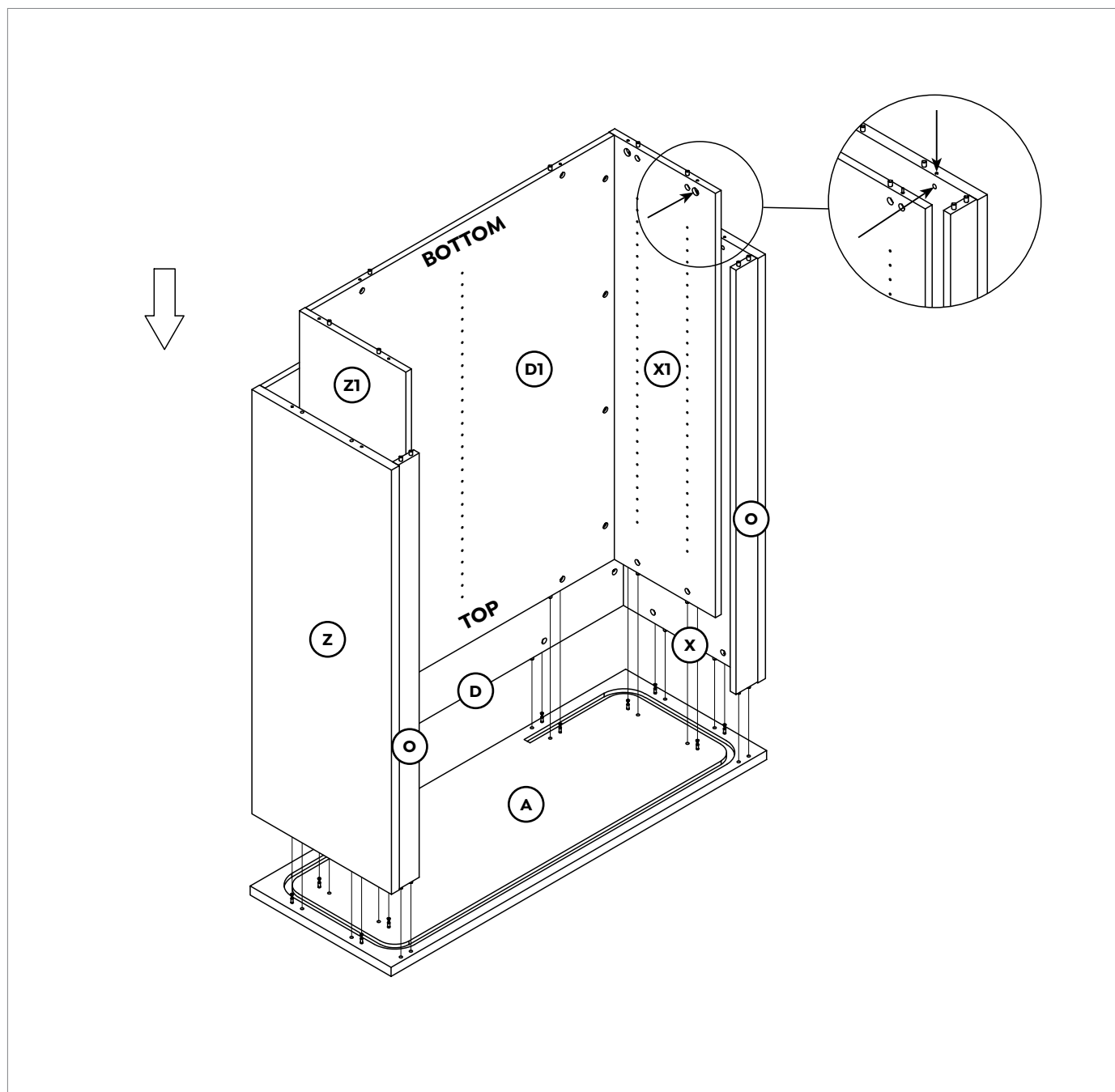
Inner panel assembly - Back panel D1, left side panel X1, right side panel Z1. (Assemble with the top of back panel D1 pointing towards the floor). Insert cam bolts (c1) on panel X1 and Z1 into cams on panels D1 and tighten in a clockwise direction.



Step 4

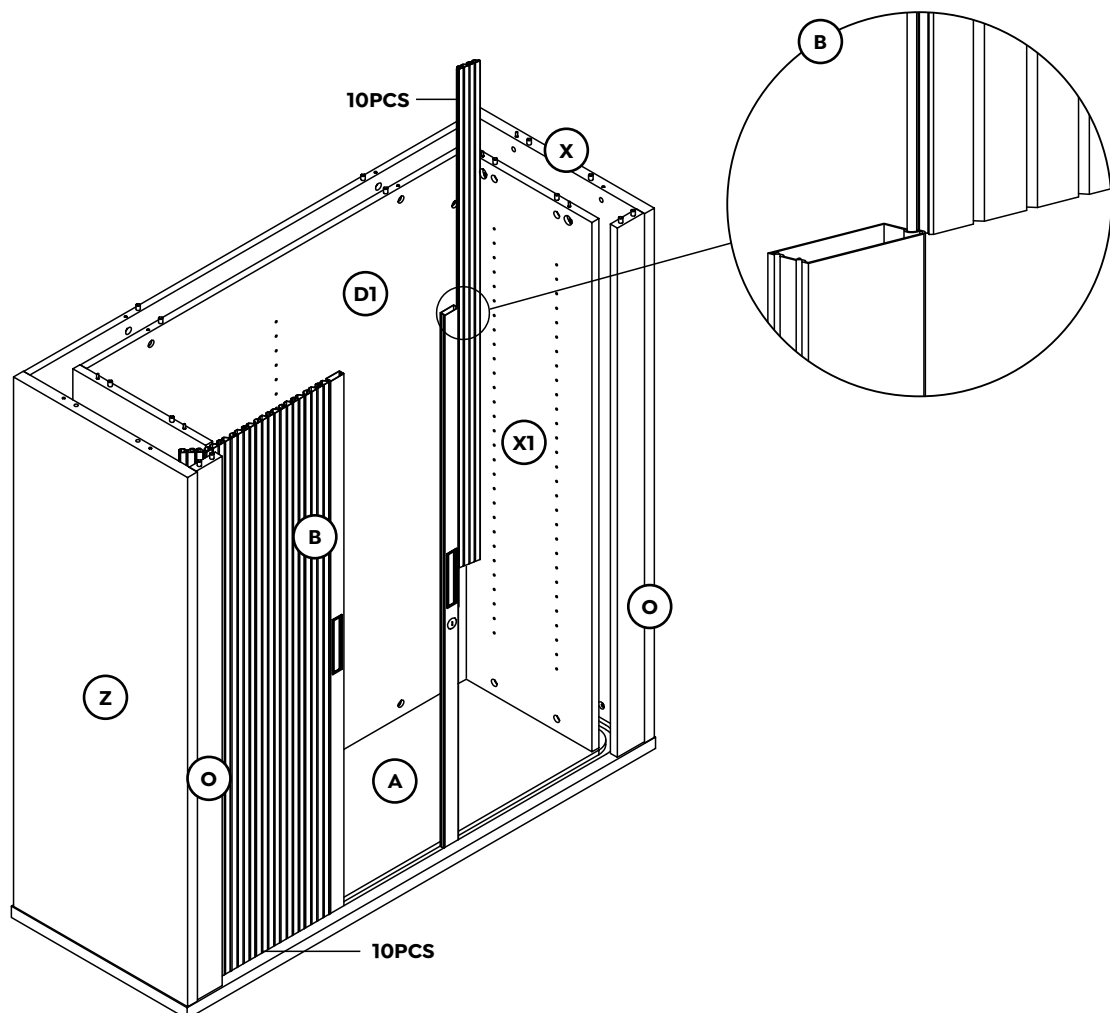
Top panel A assembly - Place top panel A on floor with tracking facing upwards. Insert cam bolts (c1) on panel A into cams on panels X, Z, D, O and tighten in a clockwise direction, repeat above assembly for the assembled inner panels X1, Z1 and D1.

Adjust screws on the inner side of panels X and Z via the through holes on panels X1 and Z1, align the hole in the screw with the vertical hole in the end of the panel to allow for the fix bolts to tighten when assembling bottom panel G in Step 6.



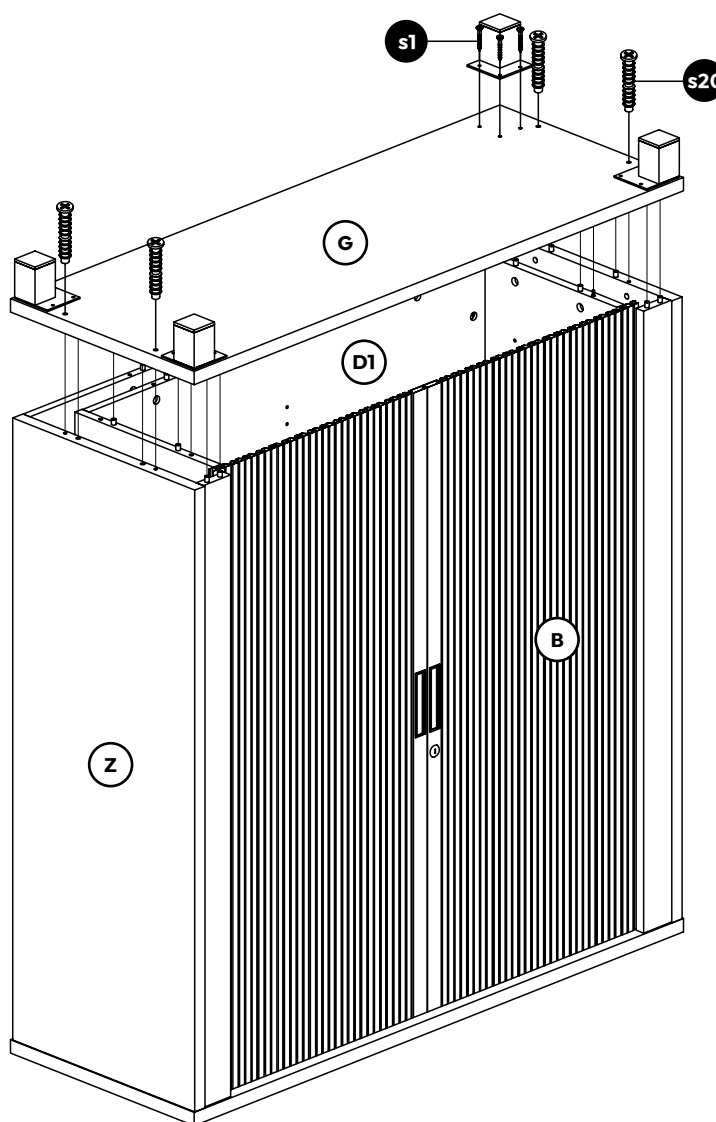
Step 5

Door assembly - Insert and slide door sections onto main door panel with handle, repeat for second door. Place roller doors into groove of top panel A making sure all sections are sliding within the groove.



Step 6

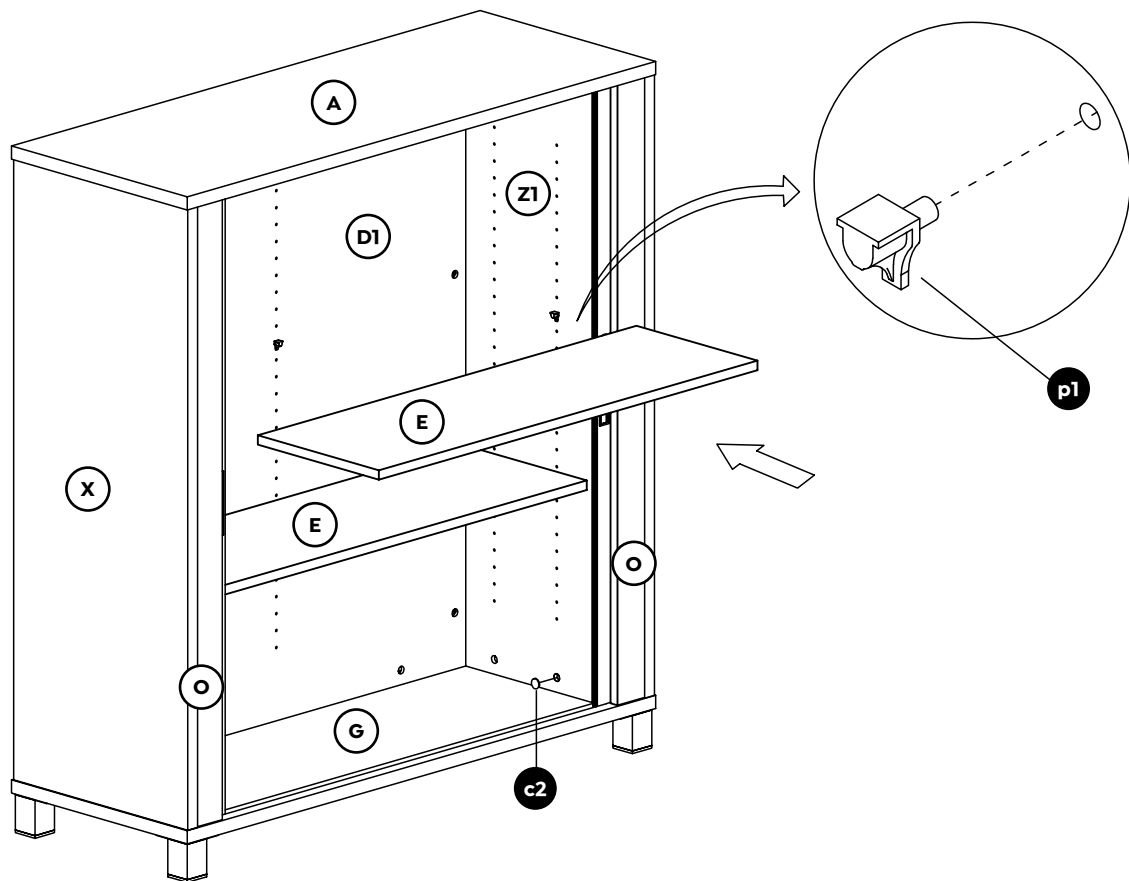
Bottom panel G assembly - Insert cam bolts (c1) on panel G into cams on panels X, X1, D, D1, Z, Z1 & O (making sure tracking in panel G aligns with the bottom of the roller door), then tighten cams in a clockwise direction. Fix bottom panel G on to panel X and Z with fix bolts (s20). Attach metal feet to panel G with provided screws (s1).



Step 7

Turn tambour over in to upright position.

Moveable shelf E assembly - Insert shelf pins (p1) into panels D1, X1, and Z1 at desired shelf heights, place panel E on top of shelf pins (p1). Place cam stickers (c2) over the top of the cams.



Complete

